

Launching a Slideshow

There are two different ways to present a Slideshow.

1. The first uses the programmed already installed on the computer and lets you connect to your slideshow through the internet. The problem with this method is that sometimes images can fail to load.
2. The second is to use the Offline instructions to download a local copy of your slideshow that you can transport on a flash drive. This method ensures that all of your images will display.

Connecting via the Internet

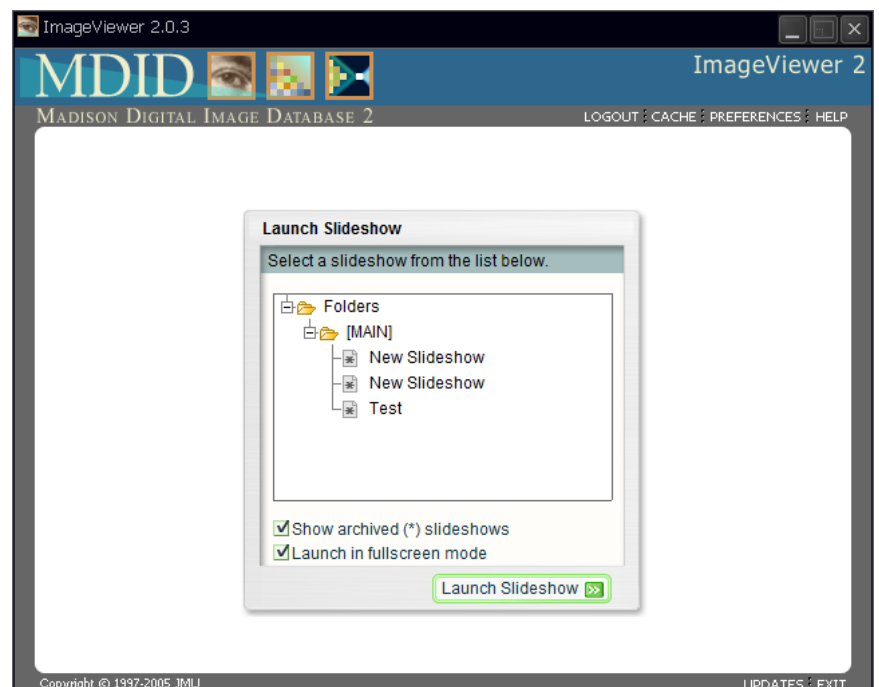
If the computer you are using already has Image Viewer Software on it, you will see an icon with this symbol on the Desktop.



If your computer does not have this software, in the left menu of MDID click on Downloads and select the ImageViewer for your operating system. Follow the steps to install it.

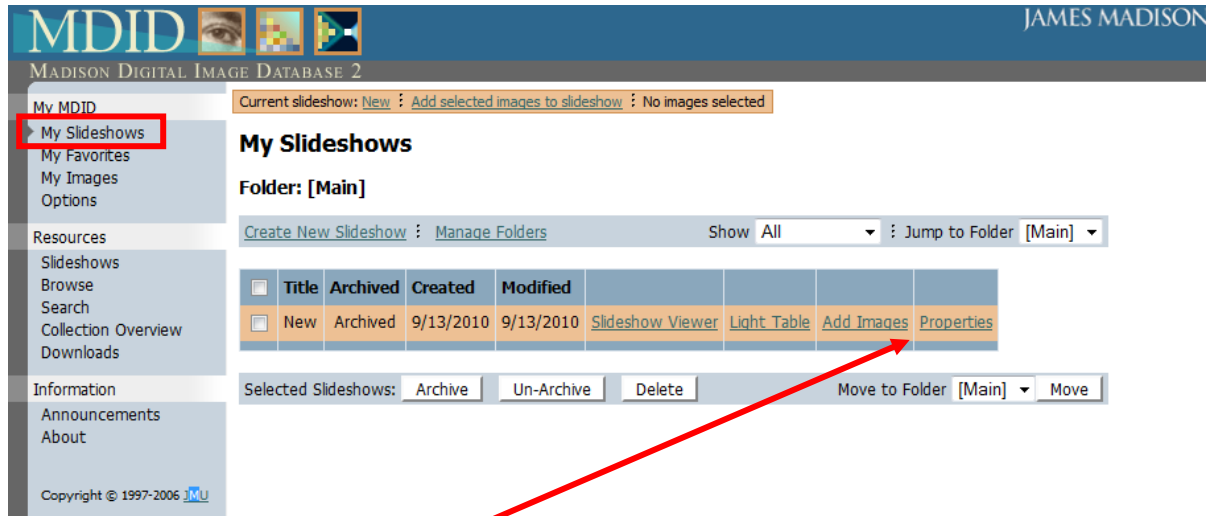
Next double click to open the software and log in with your username and password.

Click on the name of the Slideshow that you want to launch and it will open full screen.



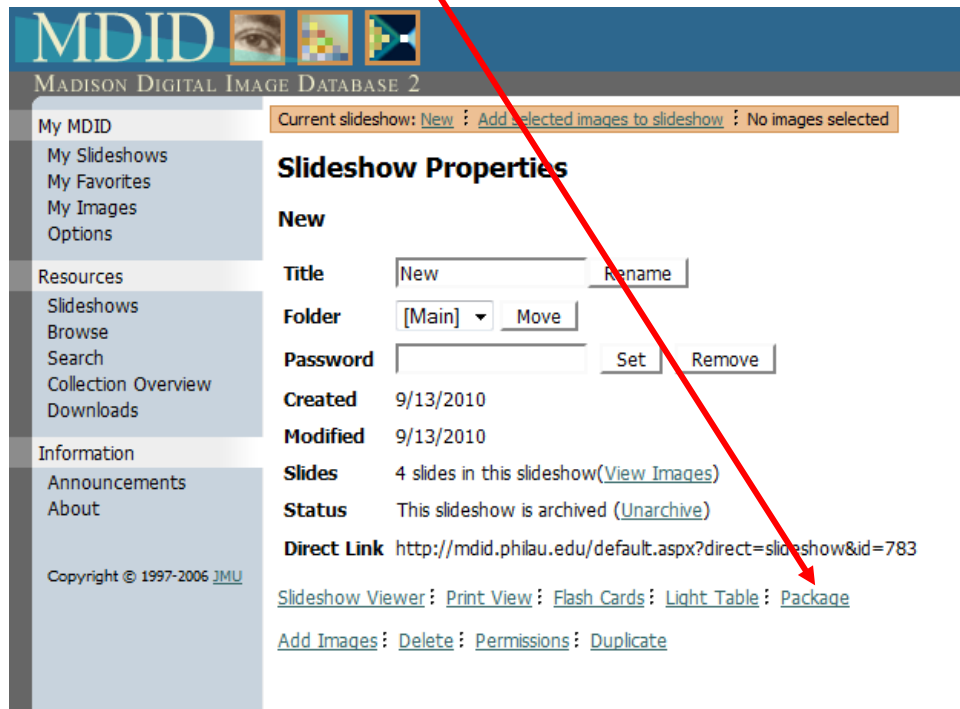
Downloading A Slideshow for Offline Viewing

From the login screen click on My Slideshows in the left menu.



Then click on Properties

From there click on Package



From this screen, select the proper operating system and leave Include ImageViewer checked.



Then click Create Package

Save the zip file to your computer.

Right click the zip file and choose Extract All and choose a location for the file.

At this point you can delete the zip file and open the extracted version.

To open this slideshow click on the imageviewer.exe file.

In the next window click Launch Package and it will open full screen.

The unzipped file can be saved on a flash drive or to your home directory for future use.